

Docents demonstrate open hearth cooking at Humphreys House in Ansonia

By Patricia Villers

ANSONIA - Beef barley soup, bread, and apple cake all freshly-made on a centuries-old hearth. Sound delicious? It was.

Visitors at the Derby Historical Society's recent autumn hearth cooking event at the David Humphreys House enjoyed samples of those foods along with mulled cider.

The event featured tours of the circa 1698 house led by costumed docents.

The house - Humphreys' birthplace - is a museum located at 37 Elm St. that serves as the historical society's headquarters.

Humphreys was a teacher, a Revolutionary War hero, and an aide-de-camp to Gen. George Washington. He later became a successful woolen mill owner in Humphreysville, which is now modern-day Seymour.



VCF Awards Over \$860,000 in Single and Multi-Year Grants

DERBY - The Valley Community Foundation (VCF) is pleased to announce that \$860,400 has been awarded as a result of its 2019 Responsive Grants process. This includes support for 7 new organizations as well as previous multi-year funding for 16 additional nonprofits.



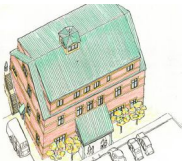
The Community Foundation
for Greater New Haven

These grant dollars will help provide a reliable source of funding during a time of financial uncertainty.

"The VCF Board is proud to serve as a continued source of stability for these local nonprofit organizations that are providing key services to those in need throughout the Valley," said Lynne Bassett Perry, VCF Board Chair.

Grants were awarded through VCF's Responsive Grantmaking cycle, which is done with its partner in philanthropy, The Community Foundation for Greater New Haven (TCF). The program is funded by a generous annual grant from TCF's Gates and other field of interest funds, as well as VCF's unrestricted and field of interest funds. Additionally, several of VCF's donor advised fundholders contributed from their funds to help make these grants possible. Supporting donor advised funds included the Agape Fund, the Alesevich Family Fund, the Mary Fund, the Joseph A. Pagliaro Sr. Family Fund, the Palazzi Family Fund, the Sally and Dominick Thomas Fund, the John Tyma Fund, and the Warichar Family Fund.

The following is a list of the 2019 VCF Responsive Grant recipients:



Area Congregations Together, Inc.: to provide general operating support for the provision of food, shelter, and support services to Valley people in need. \$120,000

Boys & Girls Club of the Lower Naugatuck Valley: to support the enhancement of the safety and well-being of facilities, staff, volunteers, children and teens. \$64,000

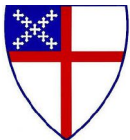


BOYS & GIRLS CLUB
OF THE LOWER NAUGATUCK VALLEY



Catholic Charities Archdiocese of Hartford: to support the Outpatient Psychiatric Clinic for Valley children, adolescents, and families. \$75,000

Center Stage Theatre Inc.: to provide general operating support for theatrical productions and performing arts education. \$60,000



Christ Episcopal Church: to provide general operating support for the Kathleen Samela Food Pantry. \$75,000

Griffin Hospital: to support Phase 2 of a surgical expansion project to increase surgical capabilities and expand capacity to better serve surgical patients. \$50,000



GRIFFIN HEALTH
Griffin Hospital



Shelton Economic Development Corporation: to support the administration of the Comprehensive Economic Development Strategy (CEDs) for the Naugatuck Valley Corridor/Economic Development District. \$45,000

About The Valley Community Foundation

The Valley Community Foundation (VCF) distributes \$1.6 million in grants each year to support the local nonprofit sector and the people it serves. VCF promotes philanthropy in Ansonia, Derby, Oxford, Seymour and Shelton and receives a majority of its discretionary funding as a result of The Gates Fund and other preference funds at TCF that benefit the Valley. Learn more by visiting the website at www.valleyfoundation.org or contact VCF President, Sharon Closius, at sclosius@valleyfoundation.org or 203-751-9162.

Seymour Congregational Church readies annual Snowflake Fair

SEYMOUR - Although snow isn't in the forecast for Saturday, the Snowflake Fair at Seymour Congregational Church is.

The church at 45 Broad St. will hold its annual pre-holiday event from 9 a.m.-3 p.m. Saturday.



The Snowflake Cafe' will feature breakfast sandwiches, cinnamon buns, hot, open-faced turkey sandwiches for lunch, stuffed baked potatoes, quiche, salad, and more.

Vendors will be selling handmade crafts, fine art, and specialty items. There will be a baked good table, a free craft activity for kids, a boutique room and a treasure room.

There also will be a raffle for a beautiful quilt hand made by several church members. (See photo) Tickets are \$1 each.



Community welcomes Big Y to Derby



After more than a year of renovations, the new Big Y supermarket held its grand opening on Nov. 7.

The 55,000 sq. ft store is located at 656 New Haven Ave in Derby.

*-Photos by
Patricia Villers*

