

## Take an audio tour of Osborne Homestead Museum

### Curator creates short tours of historic Derby sites

By Patricia Villers

DERBY - It's Friday, the day after what was a rather unusual Thanksgiving holiday and once again COVID-19 has altered an annual tradition.



The historic Osborne Homestead Museum is closed because of the pandemic.

I miss not visiting the Colonial Revival-style house to tour its rooms decorated for the holidays, something I always enjoyed doing on the day after Thanksgiving.

Area garden clubs beautifully decorate the home each year.

The museum at 500 Hawthorne Ave. is owned and operated by the Connecticut Department of Energy and Environmental Protection. The house was the lifelong home of successful businesswoman, civic leader, and philanthropist Frances Osborne Kellogg, who died at age 80 in 1956.

Museum curator Susan D. Robinson has created audio tours of the house, the adjacent Kellogg Environmental Center, Osbornedale State Park and many other sites in Derby.

Follow this link to the list of the [self-guided tours](#).



Click on the thumbnail above for a slideshow of the museum in 2015

See the previous displays at the Osborne Homestead in the Valley-Voice CT newsletter (click on icons)





## Historical Society looks at shipbuilding in Derby

By Ralph Villers

Valley residents may not be aware Derby was once a seaport. At the junction of the Naugatuck and Housatonic Rivers, goods moved through this vibrant manufacturing city.

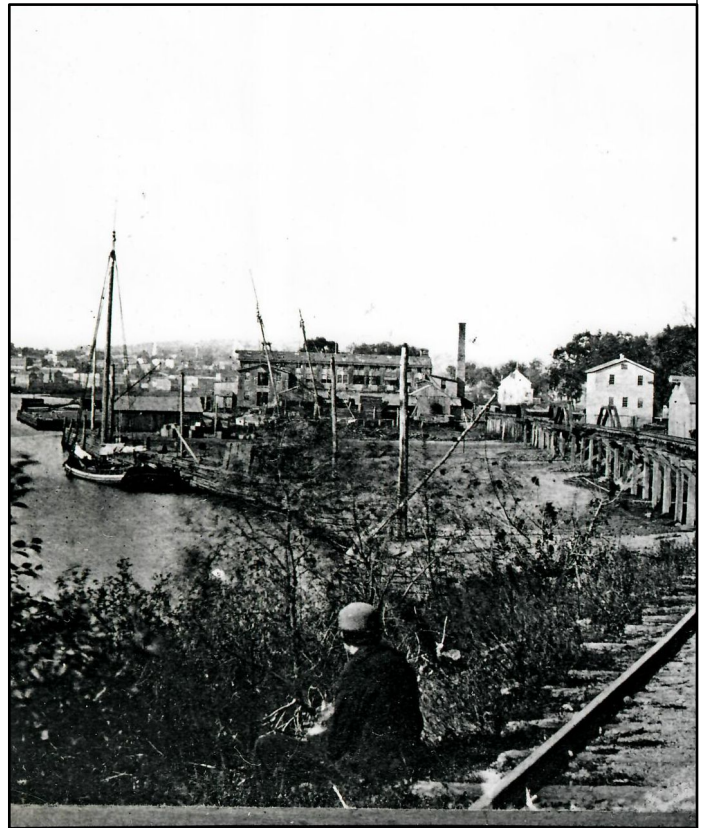
But after a few centuries, the railroads proved far more versatile at bringing raw goods in and shipping finished goods out to the wider world.

The ***Derby Historical Society*** has submitted these dramatic views of the transition from steamship to steam engine. Times changed and the Valley adapted to and kept up with the technology of the era.

Thanks go to DHS Executive Director Daniel Bosques for submitting these views of our industrial past.



Left - This is a late 19th-century winter's view of the Derby Narrows. A steam engine can be seen headed towards the front of Lemon Stone's "Castle". Hallock's Shipyard would be a little north of this location.



Right: This is a view on the eastern bank of the Housatonic. A diminishing ship-building industry that lasted over 210 years is traced over by the railroad in this scene. One can see the foremast of a sloop docked in the water, as well as what appears to be a two-masted ship onshore in the distance. This spot would be referred to as the Derby Docks in the early 20th-century.



Left - This is a late 19th-century winter's view of the Derby Narrows. A steam engine can be seen headed towards the front of Lemon Stone's "Castle". Hallock's Shipyard would be a little north of this location.



Right: This image shows the elevated railroad trestle with an engine and its crew. This was situated at the tidal area directly in front of the Hallock's Shipyard.

